

Mission Statement

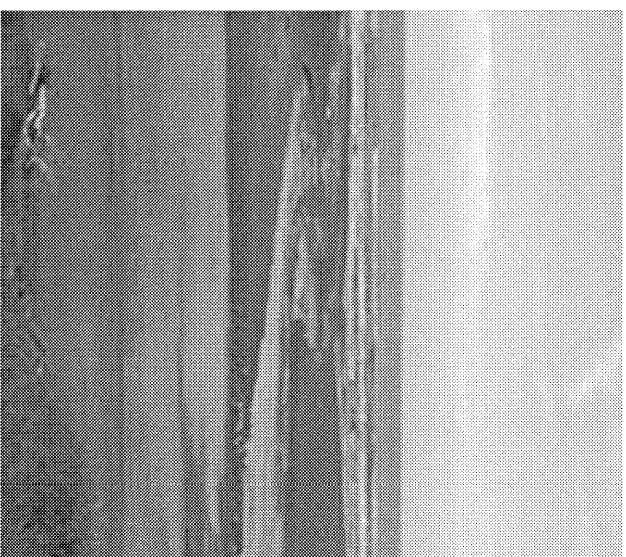
The McKinleyville Land Trust is a non-profit, public benefit corporation. The McKinleyville Land Trust promotes voluntary conservation of land for nature, timber, agriculture, education, recreation, history, and scenery. The Trust is a way for people to donate land or conservation easements in perpetuity as a means of accomplishing their personal conservation goals. Often these donations have a tax saving advantage as well.

Email

The email address for the MLT is:
mlt@asis.com

Help!!!

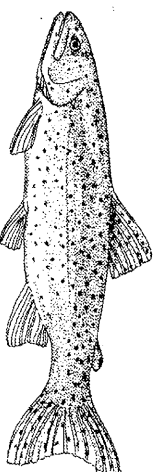
The MLT needs **fundraising** help. If you have any experience or some good ideas please call us at 839-LAND.



The McKinleyville Land Trust

MLT
P.O. Box 2723
McKinleyville, CA 95519
(707) 839-LAND

Inside This Issue:
Newly Expanded Tax Incentives for Land Conservation
Upcoming MLT Events
Volunteer Thank You
North Country Fair 2006



The McKinleyville Land Trust
For Everyone Forever



The McKinleyville Land Trust Newsletter

Winter 2006

Number 21



Newly Expanded Tax Incentives for Land Conservation

By Lindsay Walker

Time seems to fly by, and before we know it, tax season arrives. That is one reason why now is the best time to take advantage of a recently expanded federal tax deductions for land conservation.

On August 17, 2006, President Bush signed into law H.R. 4, a bill primarily concerned with pensions, but which also contained significantly expanded tax incentives for donation of conservation easements. This law:

- Raises the federal income tax deduction a landowner can take for donating a conservation easement from 30 percent of their income in any year to 50 percent;
- Allows qualifying farmers and ranchers to deduct up to 100 percent of their income; and
- Extends the carry-forward period for a donor to take tax deductions for a conservation agreement from 5 to 15 years.

The tax savings from these changes are noteworthy. For example, the Land Trust Alliance notes that:

Under the previous rules, a landowner earning \$50,000 a year who donated a \$1 million conservation easement could take a \$15,000 deduction for the year of the donation and for an additional 5 years—a total of \$90,000 in tax deductions. The new rules allow a landowner to deduct \$25,000 for the year of the donation and then for an additional 15 years. That's \$400,000 in deductions. If the landowner qualifies as a rancher or farmer, he or she could take a maximum of \$800,000 in deductions for his or her million dollar gift.

That is a significant chunk of change! Unfortunately, while organizations like the Land Trust Alliance are trying to persuade Congress to make these incentives permanent, right now they are scheduled to expire on December 31, 2007. That means these expanded benefits will only apply to easements that are donated in 2006 and 2007.



Everyone likes to save money, especially when doubled with a good cause, but you may be asking yourself, "What is a conservation easement, and is it right for me?"

A conservation easement is a voluntary agreement between a private landowner and a non-profit land trust, like the McKinleyville Land Trust. In order to engage in an easement, land trusts require that the land have natural resource, agricultural, educational, historic or scenic value. The land trust then works with the landowner by formalizing the landowner's conservation goals in the form of a legally binding document—the conservation easement. The easement can be as simple as not allowing further home building on the property that would otherwise be developable. The easement agreement can also be more complex, such as only allowing specific activities in discrete zones throughout the property. The agreement is always tailored for each and every property.

If you would like more information on the federal tax incentives visit www.lta.org/publicpolicy/tax_incentives_updates.htm. You can also contact the McKinleyville Land Trust at 839-LAND to further explore easements and your land conservation options.

Save the Dates!

By *Lindsay Walker*

You probably just picked out your new 2007 calendar and already the MLT has three upcoming events that you'll want to mark down—The Sourdough Pancake Breakfast, the Annual MLT Dinner, and for the first time, a Piano and Voice Recital by the local group, Piano Voce!

The Sourdough Pancake Breakfast will be held Saturday, January 27th at Azalea Hall in McKinleyville. Breakfast will be served from 8 a.m.-11 a.m. Your \$6 Adult/\$4 Child admission entitles you to a mouth-watering stack of our sourdough pancakes, sausage, eggs, fruit, and of course freshly brewed coffee and tea. It's a fun event, and the best breakfast deal around town!

On Saturday, March 24th, also at Azalea Hall, MLT will host our Annual Dinner Fundraiser. A dinner of Chicken Cacciatore or Eggplant Parmesan will be served at 6 p.m., followed by a keynote address at 7 p.m. Admission and Dinner is \$15 Adult/\$5 Child. This year's speaker will be Lori Dengler Ph.D., a Professor and Chair at the Geology Department at Humboldt State University. Ms. Dengler will present *Finding Fault(s): An Earthquake History of Humboldt County*.

Last, but certainly not least, a Piano and Voice recital will be held to benefit the MLT on the afternoon of Sunday, February 4. The local group, Piano Voce, will present piano duets, including Ravel's La Valse, and Debussy's Petite Suite, played by Annette Gunnee Hull and Nancy Correll. Singers Sue Mullen and Kevin Sharkey will also perform. McKinleyville residents Norman Poiston and Tina McKenzie have generously offered their home and piano for this intimate, salon-style afternoon of music. A reception afterwards will give the audience a chance to catch up on the latest news from the MLT.

We look forward to seeing you there!

We Love Our Volunteers

By *Lindsay Walker*

A significant part of the MLT's conservation efforts involve regular monitoring and maintenance of the parcels we hold in conservation. Oftentimes maintenance means labor, and the Humboldt State University Natural Resources Club has consistently offered their helping hands (and strong backs!).

Over the years, the NR Club members have removed mountains of Ivy, Blackberry and other invasive species from MLT properties and easements, ensuring healthy habitats and clear trails. Thank you HSU Natural Resource Club for all your hard work!

Not all volunteer opportunities with the land trust entail hard labor. If you're interested in volunteering for the McKinleyville Land Trust, whether it means getting outdoors and helping with our restoration efforts, assisting in fundraising events, or even applying your professional skills to help out the land trust and your community please give us a call! 839-LAND (1236)

The McKinleyville Land Trust accepts bequests. For information on making bequests to MLT, simply fill in your name, address, and phone number on the enclosed donation slip, and write "bequest information" and send it in.



The men and women of the HSU Natural Resources Club gather for a group photo after some Ivy removal.



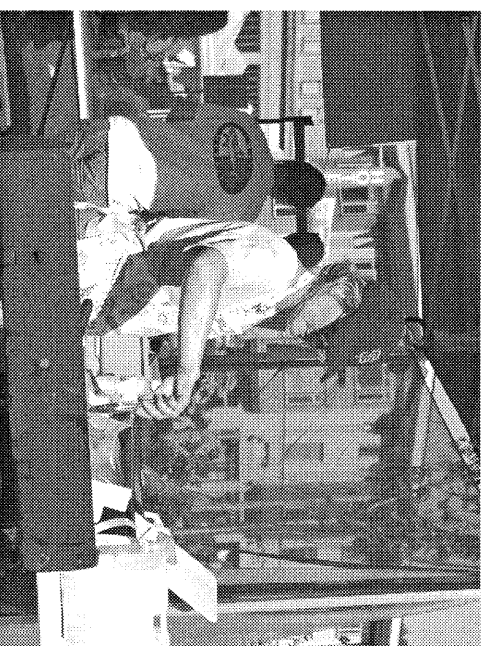
North Country Fair a Success for Land Trust

By *Lindsay Walker*

If you read the newspapers following the 2006 North Country Fair, you know that this year's event didn't run quite as smoothly as it had in years past. Despite all the controversy (and theft of some of the land trusts supplies and equipment), the McKinleyville Land Trust's food booth had its most successful year yet!

For two full days crowds lined up for the Greek Gyros as MLT Board Members and volunteers dished up the good stuff.

Our many volunteers worked tirelessly to keep the operation running smoothly and the customers well fed. The MLT Board would like to extend a heartfelt thanks to for their help in making this a very successful fair for the Land Trust.



Keep those Gyros coming!

McKinleyville Land Trust Board of Directors 2006

Allen Bird – President
Kristin Schmidt – Vice President
Dorothy Klein – Secretary
Gina M. Rinson – Treasurer
Jeff Dunk
Darci Short
Nancy Correll
Lindsay Walker

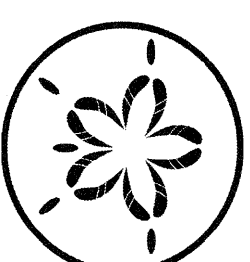
MLT Newsletter Staff

TallChief A. Comet—Desktop Publisher
Lindsay Walker—Newsletter Coordinator

And the directors of the MLT for their comments and suggestions.



Customers continue to line up, even as the fair comes



MLT COFFEE MUGS designed by Dorothy Klein are available! Tastefully done in cobalt blue or green glass with silver trilliums, they are \$8.00 (including tax) and would make a great gift. The mugs can be ordered by calling MLT at 839-LAND or purchased at Blake's Books in McKinleyville.